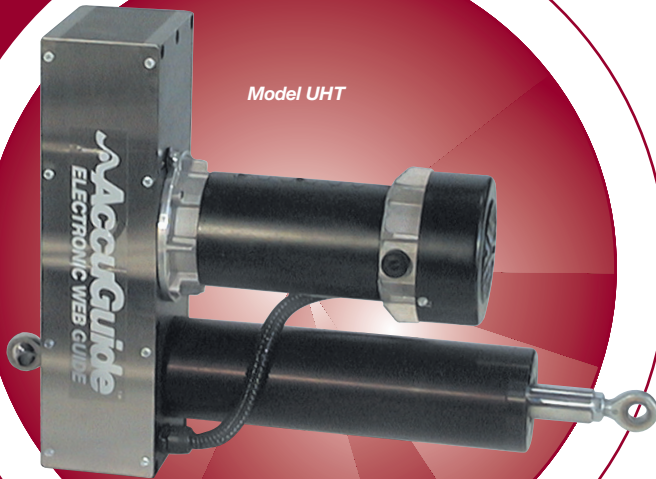


# AccuWeb®

## Electromechanical Linear Actuators

Model UHT

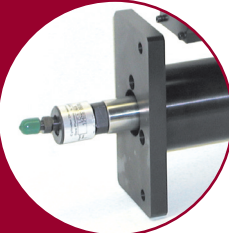


Part of the most advanced web guide system available today

The industry's most rugged and reliable, high-performance linear actuators

**Only AccuWeb covers the entire range of web guide applications with electromechanical linear actuators. Choose from brushed or brushless and AC Servo models, available for applications exceeding 100,000 lbs.**

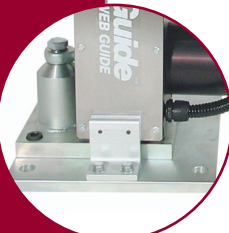
Flange mounting for hydraulic cylinder replacement



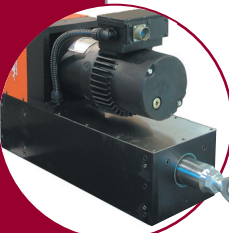
Explosion-proof motor for hazardous applications



Custom mounting brackets



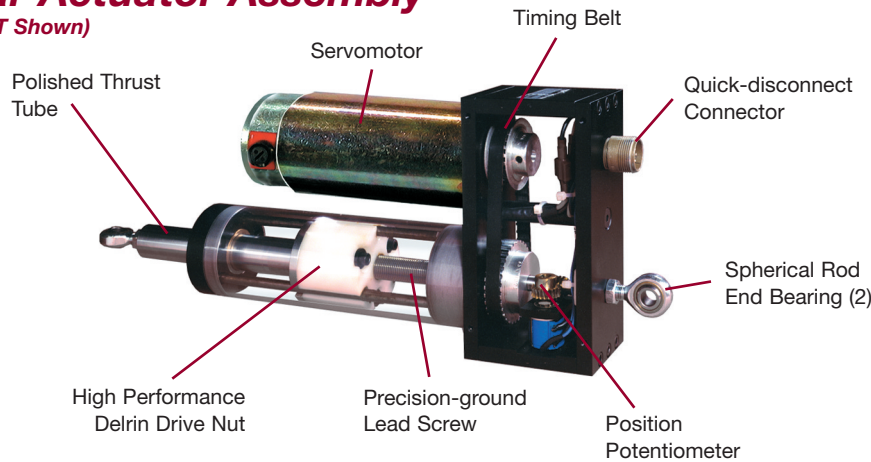
VHT actuators rated to move 60,000 kg loads



- **Zero Backlash for Maximum Accuracy** — Belt-driven ball-screw/lead-screw design for superior reliability and low maintenance. Industrial-grade, sealed thrust bearings are used in all actuators.
- **Load-Rating** — Models available to guide loads exceeding 100,000 lbs when mounted on low friction linear bearings.
- **Servo-Center** — Standard on all models. Servo-center position may be adjusted on most models.
- **Easy Installation** — Internal end-of-travel (EOT) protection eliminates external switches and wiring.
- **Long Stroke** — Up to  $\pm 10$ " stroke standard. Optional models with up to  $\pm 24$ " stroke available.
- **Applications** — Linear actuators can be applied to guide frames (both positive displacement guides and steering roll guides), unwind stands, winders, rewinders, coilers, and uncoilers.
- **Hazardous Duty Operation** — Linear actuator models with brushless and purged DC motors available to operate in Class I Division 1 Group C&D hazardous environments.

# Linear Actuator Assembly

(Model MT Shown)



# A Better Linear Actuator Design

- High-performance DC Servo motors.
- Extended-life, heavy-duty brushes.
- Rugged, sealed construction.
- High quality, over-sized industrial grade, sealed thrust bearings.
- Pre-lubricated maintenance-free design.
- Heavy-duty rod ends simplify installation and withstand side loads.
- All models have end-of-travel (EOT) and Servo-center Function.
- Back driving is eliminated by unique ball screw/lead screw timing belt configuration.

## Actuator Model Comparison Chart

Actuator Model	MT	SF	HF	HL	UHT	VHT	MME	MNE	MX
Available travel (+/- inches)	Up to ± 6" (150 mm)	Up to ± 6" (150 mm)	Up to ± 6" (150 mm)	Up to ± 6" (150 mm)	Up to ± 24" (610 mm)	Up to ± 12" (305 mm)	± 0.25, 0.33, 0.50, 0.63, 0.75, 0.88, 1.00, 1.25, 1.50, 1.63, 1.75, 2.00, 2.75, 3.00, 3.75, 4.00 (25-50-100 mm)	± 1.00, 1.50, 2.00, 2.50, 3.00, 3.50, 4.00, 4.50, 5.00 (75-100-125 mm)	± 0.38, 0.50, 1.00 (9.6, 12.7, 25 mm)
Maximum load	500 lbs. (227 kg)	3,500 lbs. (1,590 kg)	5,000 lbs. (2,272 kg)	10,000 lbs. (4,545 kg)	40,000 lbs. (18,181 kg)	60,000 lbs. (27,272 kg)	500 lbs. (227 kg)	3,500 lbs. (1,590 kg)	Available only with steering roll or PDG
Maximum breakaway force	20 lbs. (89 N)	50 lbs. (222 N)	100 lbs. (444 N)	150 lbs. (667 N)	500 lbs. (2,224 N)	1,000 lbs. (4,448 N)	20 lbs. (89 N)	50 lbs. (222 N)	
End-of-travel limit mechanism	Potentiometer						Limit Switches		Limit Switches
Digitally adjustable end-of-travel limit	✓	✓	✓	✓	✓	✓			
Digitally adjustable Servo-center position	✓	✓	✓	✓	✓	✓	Fixed	Fixed	
Digitally adjustable oscillation distance	✓	✓	✓	✓	✓	✓			
Digitally adjustable oscillation rate	✓	✓	✓	✓	✓	✓	✓	✓	
DC Servo motor	✓	✓	✓	✓	✓	✓	✓	✓	✓
Lead screw assembly	✓	✓	✓	✓	✓	✓	✓	✓	
Sealed construction	✓	✓	✓	✓	✓	✓	✓	✓	✓
Pre-lubricated	✓	✓	✓	✓	✓	✓	✓	✓	✓
Chaser/Slave	✓	✓	✓	✓	✓	✓	✓	✓	✓
Master/Follower	✓	✓	✓	✓		✓			
Available as purged	✓	✓	✓	✓			✓	✓	
Explosion-Proof Brushed DC	Optional	Optional	Optional	Optional	Optional	Optional	Optional	Optional	
Explosion-Proof Brushless DC		Optional	Optional	Optional	Optional	Optional		Optional	
Micro 1000® Controller	✓	✓	✓				✓	✓	✓
Micro 4000®NET Controller	✓	✓	✓	✓	✓	✓	✓	✓	✓

## Actuator Options

- Support Brackets
- Flange Mount
- Clevis Mount
- Precision Rod-ends
- Bellows
- Motor Cover
- Stainless Steel Fasteners
- Alignment Coupler
- Gear Reducer
- Air Purge
- Wash Down



Toll free: (888) 422-2893 • Web site: [www.accuweb.com](http://www.accuweb.com)

World Headquarters

P.O. Box 7816  
Madison, WI 53707 U.S.A.

Phone: (608) 223-0625

Fax: (608) 223-0074