



BPDV2150R-VF-SP

43 GHz balanced photodetector, dual input: SC/PC connector, output: V-female connector, single wavelength 1550nm, 2-fiber low skew, DWDM

FEATURES

- High 3 dB bandwidth of >40 GHz
- Optical window at 1550 nm
- Excellent linearity
- High responsivity of >0.5 A/W
- Low PDL of <0.5 dB

APPLICATIONS

- Optical Communication systems
- Advanced component R&D

Datasheet

<https://ii-viincorporated1.box.com/s/fmucpwo4stc8xazjgiao5m88e>

COO: Germany

Request Quote



BPDV2150R-VM-FA

43 GHz balanced photodetector, dual input: SC/PC connector, output: V-female connector, single wavelength 1550nm, 2-fiber low skew, DWDM

FEATURES

- High 3 dB bandwidth of >40 GHz
- Optical window at 1550 nm
- Excellent linearity
- High responsivity of >0.5 A/W
- Low PDL of <0.5 dB

APPLICATIONS

- Optical Communication systems
- Advanced component R&D

Datasheet

<https://ii-viincorporated1.box.com/s/fmucpwo4stc8xazjgiao5m88e>

COO: Germany

Request Quote



FCBG110SD1Cxx

SFPwire® 10G Ethernet SFP+ Active Optical Cable

Hot-pluggable SFP+ cable ends
Supports 10.3125 Gb/s bit rate
RoHS compliant
Available lengths (in meters): 1, 1.5, 2, 2.5, 3, 3.5, 5, 7, 10, 15, 20
SFI limiting interface
Single 3.3V power supply
Low power dissipation
Commercial temperature range: 0°C to 70°C
Rigid pull-tab for improved high-density installations

Datasheet

<https://app.boxcn.net/shared/static/md9yarsk8wu67s8ceiughtwoef34.pdf>

COO: China

Request Quote



FCBG125SD1Cxx

SFPwire® 25G Ethernet SFP+ Active Optical Cable with Connectivity Diagnostics®

Hot-pluggable SFP+ cable ends
Supports 25.7813 Gb/s bit rate
[Connectivity Diagnostics®](#)
SFI limiting interface
Input equalization and output emphasis controls
Single 3.3V power supply
Low power dissipation
Temperature range: 0°C to 70°C
Rigid pull-tab with embedded LED light

Datasheet

<https://app.boxcn.net/shared/static/3ae0vljmsl26701ureyf20nakegu.pdf>

COO: China

Request Quote



FCBN510QE2Cxx



Quadwire® 40G QSFP to 4x10G SFP+ Parallel Breakout Active Optical Cable

Four-channel full-duplex active optical cable with breakout from QSFP+ to four SFP+

10.3125 Gb/s per channel

Low weight for high port count architectures

High-density 40 Gb/s interconnectivity

Small bend radius for easy installation and fiber management

Low power consumption

Complies with QSFP+ and SFP+ MSA form factors

Utilizes vertically integrated and highly reliable VCSEL technology

Datasheet

<https://app.boxcn.net/shared/static/y04ii46r46xk6g69tfjlnhj12ji3b.pdf>

COO: China

Request Quote



FCBN425QE2Cxx



Quadwire® 100G Active Optical Cable

High-density 100 Gb/s interconnectivity

Low weight for high port count architectures

Small bend radius for easy installation and fiber management

Based on industry-standard QSFP28 form factor

Utilizes vertically integrated and highly reliable VCSEL technology

Excellent signal integrity

Datasheet

<https://app.boxcn.net/shared/static/b7set62dbjrddg4tdsp1nt667zah.pdf>

COO: China

Request Quote



FCLF852xP2BTL

1000BASE-T 100m Gen2 RJ-45 Copper SFP Optical Transceiver FCLF8520P2BTL / FCLF8521P2BTL / FCLF8522P2BTL

Up to 1.25Gb/s bi-directional data links
Hot-pluggable SFP footprint
Fully metallic enclosure for low EMI
RoHS compliant
Low power dissipation (1.05 W typical)
Compact RJ-45 connector assembly
Access to physical layer IC via 2-wire serial bus
10/100/1000 BASE-T operation in host systems with SGMII interface
Extended case temperature range: -40°C to 85°C

Datasheet

<https://app.boxcn.net/shared/static/gy7o6a8vjbtwk8e16yavfbnberp40.pdf>

COO: Malaysia

Request Quote



FTL410QD4C

40GBASE-SR4/10GBASE-SR 300m Gen4 QSFP+ Optical Transceiver

Four-channel full-duplex transceiver module
Hot-pluggable QSFP+ form factor
Maximum link length of 300m on OM3 Multimode Fiber (MMF) and 400m on OM4 MMF
Multirate capability: 1.06Gb/s to 10.5Gb/s per channel
Unretimed XLPP electrical interface
Maximum power dissipation < 1W
Reliable VCSEL array technology
Built-in digital diagnostic functions, including Tx and Rx power monitoring
Commercial operating case temperature range 0°C to 70°C
Single 1x12 MPO receptacle
RoHS compliant

Datasheet

<https://app.boxcn.net/shared/static/nbrkod77fmrejkzwrp3jg1p5qj7a.pdf>

COO: China

Request Quote



FTL410QE2C

40GBASE-SR4 150m Gen2 QSFP+ Optical Transceiver

Four-channel full-duplex transceiver module
Hot-pluggable QSFP+ form factor
Maximum link length of 100m on OM3 Multimode Fiber (MMF) and 150m on OM4 MMF
Multirate capability: 1.06Gb/s to 10.5Gb/s per channel
Unretimed XLPPI electrical interface
Maximum power dissipation < 1.5W
Reliable VCSEL array technology
Commercial temperature range 0°C to 70°C
Single 1×12 MPO receptacle
RoHS compliant

COO: China

[Datasheet](#)

<https://app.boxcn.net/shared/static/rwgzmvqgzmuvxjh89jgtxwqf05xh9.pdf>

Request Quote



FTL410QE3C

40GBASE-SR4 150m Gen3 QSFP+ Optical Transceiver

Four-channel full-duplex transceiver module
Hot-pluggable QSFP+ form factor
Maximum link length of 100m on OM3 Multimode Fiber (MMF) and 150m on OM4 MMF
Multirate capability: 1.06Gb/s to 10.5Gb/s per channel
Unretimed XLPPI electrical interface
Maximum power dissipation < 1.5W
Reliable VCSEL array technology
Real-time digital diagnostic functions, including Tx and Rx power monitoring
Commercial temperature range 0°C to 70°C
Single 1×12 MPO receptacle
RoHS compliant

COO: China

[Datasheet](#)

<https://app.boxcn.net/shared/static/ispjhjml0g5z3yva9d95uqd9il05lw8m.pdf>

Request Quote



FTL410QE4C

40GBASE-SR4 150m Gen4 QSFP+ Optical Transceiver

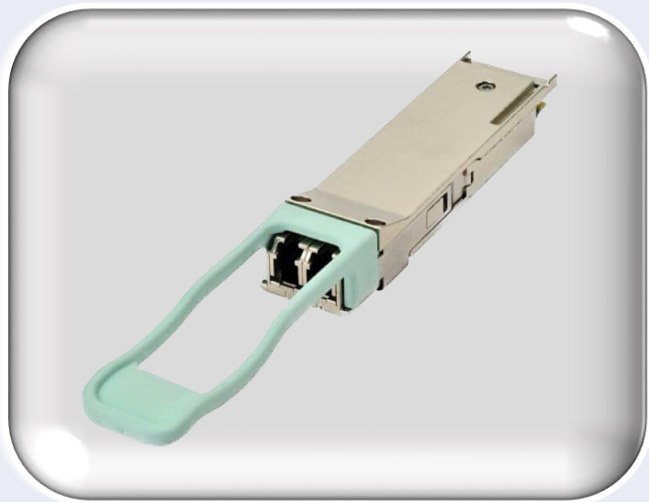
Four-channel full-duplex transceiver module
Hot-pluggable QSFP+ form factor
Maximum link length of 100m on OM3 Multimode Fiber (MMF) and 150m on OM4 MMF
Multirate capability: 1.06Gb/s to 10.5Gb/s per channel
Unretimed XLPP electrical interface
Maximum power dissipation < 1W
Reliable VCSEL array technology
Built-in digital diagnostic functions, including optical power monitoring
Commercial temperature range 0°C to 70°C
Single 1x12 MPO receptacle
RoHS compliant

COO: China

[Datasheet](#)

<https://app.boxcn.net/shared/static/9yiqrhjgazexcfn5hz97ov0cl9msd.pdf>

[Request Quote](#)



FTL4C3QE2C

40G Ethernet LM4 1km Universal Duplex Single Mode and Multimode Gen2 QSFP+ Optical Transceiver

Hot-pluggable QSFP+ form factor
Operates over duplex multimode and single mode fiber with dual LC receptacles
Supports 41.2 Gb/s aggregate bit rate
Power dissipation < 3.5W
Commercial operating case temperature range 0°C to 70°C
Maximum link length of 140m on OM3, 160m on OM4, and 1km on SMF
Uncooled 4x10Gb/s CWDM transmitter
XLPP electrical interface
Built-in digital diagnostic functions, including Tx/Rx power monitoring
RoHS compliant

COO: Malaysia

[Datasheet](#)

<https://app.boxcn.net/shared/static/ffvvhb4feaq28tphm vb148k9tq5oehbim.pdf>

[Request Quote](#)



FTLC1154RDPL

100GBASE-LR4 10 km Gen2 QSFP28 Optical Transceiver

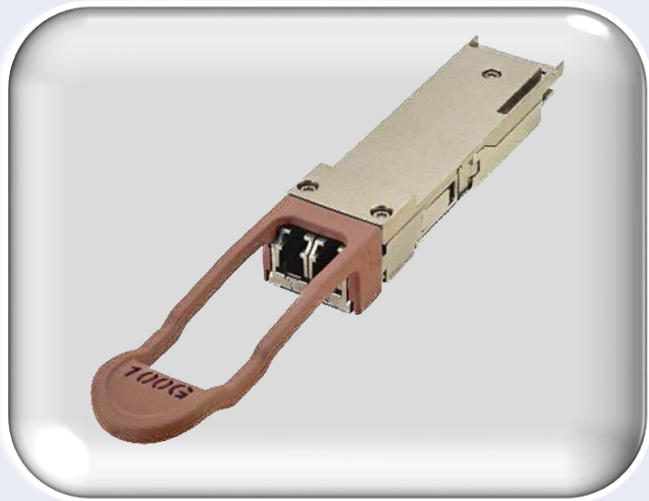
Hot-pluggable QSFP28 form factor
Supports 103.1Gb/s aggregate bit rate
Power dissipation <3.5WRoHS compliant
Commercial case temperature range of 0°C to 70°C
Adaptive CTLE
Single 3.3V power supply
Maximum link length of 10km on Single Mode Fiber (SMF)4x25Gb/s
DFB-based LAN-WDM transmitter
4x25G retimed electrical interface
Duplex LC receptacles
I2C management interface

COO: Malaysia

[Datasheet](#)

<https://app.boxcn.net/shared/static/xs6adyvny88r72vj1dlitc0sg4i75...pdf>

Request Quote



FTLC1154RDPLD

100G 4WDM eLR4 20km Industrial Temperature QSFP28 Optical Transceiver

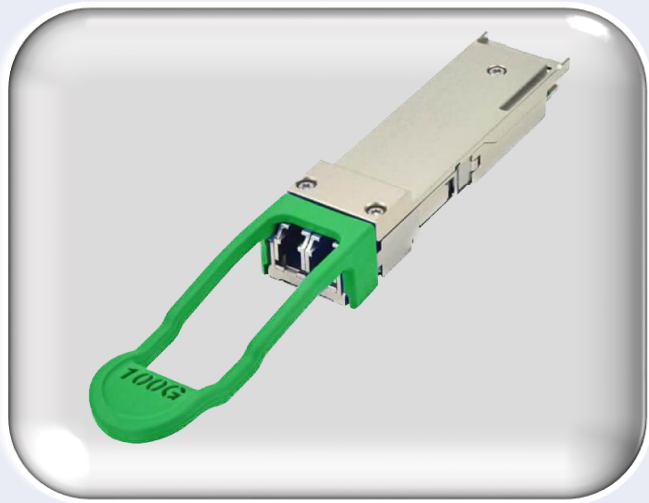
Hot-pluggable QSFP28 form factor
Supports 103.1Gb/s aggregate bit rate
Power dissipation < 4.5WRoHS-6 compliant
Industrial temperature range of -40°C to 85°C
Single 3.3V power supply
Maximum link length of 20km on Single Mode Fiber (SMF)
4x25Gb/s DFB-based LAN-WDM transmitter
4x25G retimed electrical interface
Duplex LC receptacles
I2C management interface

COO: China

[Datasheet](#)

<https://app.boxcn.net/shared/static/wq1llwu668s4o7ku4zkbb1r28ir4.pdf>

Request Quote



FTLC1157RGPLA

100G 4WDM eCWDM4 10km Optical Transceiver

Hot-pluggable QSFP28 form factor
Supports 103.1Gb/s aggregate bit rate
Power dissipation < 3.5W RoHS compliant
Commercial case temperature range of 0°C to +70°C
Adaptive CTLE
Single 3.3V power supply
Loss budget of 5 dB on up to 2km of Single Mode Fiber (SMF) [with KR4 FEC]
4x25Gb/s CWDM transmitter
4x25G retimed electrical interface
Duplex LC receptacles I2C management interface

COO: Malaysia

[Datasheet](#)

<https://app.boxcn.net/shared/static/sc91jgqxve78vxav0gowkvdzv7u...pdf>

Request Quote



FTLC9152RGPL

100G 100m SWDM4 QSFP28 Optical Transceiver

Hot-pluggable QSFP28 form factor
Supports 103.1Gb/s aggregate bit rate
Power dissipation <3.5W
RoHS compliant
Commercial case temperature range of 0°C to 70°C
Single 3.3V power supply
Maximum link length of 75m/100m/150m on OM3/OM4/OM5 Duplex Multimode Fiber (MMF)
4x25Gb/s 850nm VCSEL-based transmitter
4x25G CAUI-4 electrical interface
Duplex LC receptacles
I2C management interface

COO: China

[Datasheet](#)

<https://app.boxcn.net/shared/static/wmdty0lfoicvkr8qat43vh8h...c8xw.pdf>

Request Quote



FTLC9555REPM3

100G Parallel MMF 100m Extended Temp QSFP28 Optical Transceiver

Hot-pluggable QSFP28 form factor
Supports 103.1Gb/s aggregate bit rate
Power dissipation <2.5WRoHS compliant
Extended case temperature range of 0°C to 85°C
Single 3.3V power supply
Maximum link length of 100m on OM4 Multimode Fiber (MMF)
4x25Gb/s 850nm VCSEL-based transmitter
4x25G electrical interface
Single MPO12 receptacle
I2C management interface

COO: China

[Datasheet](#)

[Request Quote](#)



FTLF1318P3BTL

1000BASE-LX and 1G Fibre Channel (1GFC) 10km Industrial Temperature Gen3 SFP Optical Transceiver

Up to 1.25Gb/s bi-directional data links
Hot-pluggable SFP footprint
Build-in digital diagnostic functions
1310nm Fabry-Perot laser transmitter
Duplex LC connector
RoHS compliant
Up to 10 km on 9/125µm SMF
Metal enclosure for lower EMI
Single 3.3V power supply
Low power dissipation <600mW typical
Industrial operating temperature range: -40°C to 85°C

COO: Malaysia

[Datasheet](#)

<https://app.boxcn.net/shared/static/9r952233i9h2vmqgy7z0l8x862thw8j.pdf>

[Request Quote](#)



FTLF1323P1xTR

OC-3 SR-1/STM I-1 or OC-3 IR-1/STM S-1.1 SFP Optical Transceiver

Up to 155 Mb/s bi-directional data links
Hot-pluggable SFP footprint
Built-in digital diagnostic functions
Uncooled Fabry-Perot 1310nm laser transmitter
Duplex LC connector
RoHS compliant
Metal enclosure, for lower EMI
Single 3.3V power supply
Low power dissipation <700mW typical
Industrial operating temperature range: -40°C to 85°C

[Datasheet](#)

<https://app.boxcn.net/shared/static/nqq30igo9sewta0ye74qhpi5xg3.pdf>

COO: Malaysia

Request Quote



FTLF1422P1xTL

OC-12 LR-1/STM L-4.1 SFP Optical Transceiver

622 Mb/s bi-directional data links
Hot-pluggable SFP footprint
Built-in digital diagnostic functions
Uncooled DFB 1310nm laser transmitter
Duplex LC connector
RoHS compliant
Metal enclosure, for lower EMI
Single 3.3V power supply
Low power dissipation <700mW typical
Industrial operating temperature range: -40°C to 85°C

[Datasheet](#)

<https://app.boxcn.net/shared/static/9r952233i9h2vmqgyz7z0lf2thw8j.pdf>

COO: Malaysia

Request Quote



FTLF1436P4BCL

25GE LR 10km SFP28 Optical Transceiver

Up to 25.78 Gb/s bi-directional data links
Hot-pluggable SFP28 footprint
Built-in digital diagnostic functions
1310nm DFB laser transmitter
Duplex LC connector
RoHS compliant
Up to 10 km on 9/125µm SMF
Metal enclosure, for lower EMI
1.5W maximum power consumption with established link
Single 3.3V power supply
Operating temperature range: 0°C to 70°C

Datasheet

<https://app.boxcn.net/shared/static/yq5bp4nk57cmppbj0v9q8nld586s.pdf>

COO: Malaysia

Request Quote



FTLF1518P1BTL

1000BASE-ZX and 1G Fibre Channel (1GFC) 80km SFP Optical Transceiver

Up to 1.25Gb/s bi-directional data links
Hot-pluggable SFP footprint
Built-in digital diagnostic functions
Uncooled 1550nm DFB laser transmitter
Duplex LC connector
RoHS compliant
Metal enclosure, for lower EMI
Single 3.3V power supply
Up to 80 km on 9/125µm SMF
Low power dissipation <700mW typical
Extended operating temperature range: -40°C to 85°C

Datasheet

<https://app.boxcn.net/shared/static/ghc20atpux0t1s8gbzmfwk5ue9.pdf>

COO: Malaysia

Request Quote



FTLF8519P3BNL

1000BASE-SX and 2G Fibre Channel (2GFC) 500m Extended Temperature SFP Optical Transceiver

Up to 2.125 Gb/s bi-directional data links
Hot-pluggable SFP footprint
Built-in digital diagnostic functions
850nm Oxide VCSEL laser transmitter
Duplex LC connector
RoHS compliant
Up to 500m on 50/125 μ m MMF, 300m on 62.5/125 μ m MMF
Metal enclosure, for lower EMI
Single 3.3 V power supply
<500mW power dissipation
Extended operating temperature range: -20°C to 85°C

[Datasheet](#)

<https://app.boxcn.net/shared/static/nkmgcx6muewqzv0n...nnwfas3v0x4u9.pdf>

COO: Malaysia

Request Quote



FTLF1519P1xNL

1000BASE-ZX and 2G Fibre Channel (2GFC) 80km SFP Extended Temperature Optical Transceiver

Up to 2.125Gb/s bi-directional data links
Hot-pluggable SFP footprint
Built-in digital diagnostic functions
Uncooled 1550nm DFB laser transmitter
Duplex LC connector
RoHS compliant
Metal enclosure, for lower EMI
Single 3.3V power supply
Up to 80 km on 9/125 μ m SMF
Low power dissipation typically <700mW
Extended operating temperature range: -5°C to 85°C

[Datasheet](#)

<https://app.boxcn.net/shared/static/8tbbj6gjn3p38m4l7ow9gk6ley9.pdf>

COO: Malaysia

Request Quote



FTLF8524E2xNL

4G Fibre Channel (4GFC) 150m 2x7 PIN SFF Optical Transceiver

Up to 4.25 Gb/s bi-directional data links

2x7 pin SFF-like footprint

Built-in digital diagnostic functions

850 nm Oxide VCSEL laser transmitter

Duplex LC connector

RoHS compliant

Very low jitter

Up to 500 m on 50/125 μ m MMF, 300 m on 62.5/125 μ m MMF

Metal enclosure, for lower EMI

Single 3.3V power supply

Extended operating temperature range: -10°C to 85°C

Rate selectable version and non-rate selectable version available

[Datasheet](#)

<https://app.boxcn.net/shared/static/fs5rblub2xyhivoi32v87c1h7ymyo.pdf>

COO: Malaysia

Request Quote



FTLF8528P3BNV

8G Fibre Channel (8GFC) 150m Extended Temperature SFP+ Optical Transceiver

Up to 8.5 Gb/s bi-directional data links

Hot-pluggable SFP+ footprint

Built-in digital diagnostic functions

850nm Oxide VCSEL laser transmitter

Duplex LC connector

RoHS compliant 50m on 50/125 μ m MMF

150m on high-bandwidth

50/125 μ m (OM3) MMF

Metal enclosure, for lower EMI

Single 3.3V power supply <0.5W power dissipation

Extended operating temperature range: -5°C to 85°C

[Datasheet](#)

<https://app.boxcn.net/shared/static/ml9t20z3iwwbguo6ints1sylxgzg8.pdf>

COO: Malaysia

Request Quote



FTLF8532P4BCV

32G Fibre Channel (32GFC) Short-Wavelength SFP28 Optical Transceiver

Up to 28.05 Gb/s bi-directional data links
Hot-pluggable SFP+ footprint
Built-in digital diagnostic functions
850nm Oxide VCSEL laser transmitter
Duplex LC connector
RoHS compliant
100m over M5F MMF (50/125µm OM4)
70m over M5E MMF (50/125µm OM3)
20m on 50µm (OM2) MMF
Metal enclosure, for lower EMI
Single 3.3V power supply
Operating temperature range: 0°C to 70°C

Datasheet

<https://app.boxcn.net/shared/static/67ggvilen6osblfdgzcsti1tngd4.pdf>

COO: Malaysia

Request Quote



FTLF8536P5xyz

25GE SR/10GE SR Lite/eCPRI 100m SFP28 Optical Transceiver

Up to 25.78 Gb/s bi-directional data links
Hot-pluggable SFP+ footprint
Built-in digital diagnostic functions
850nm Oxide VCSEL laser transmitter
Duplex LC connector
Bail latch or pull tab
RoHS compliant
100m over M5F MMF (50/125µm OM4)
70m over M5E MMF (50/125µm OM3)
Metal enclosure, for lower EMI
1W maximum power consumption
Single 3.3V power supply
Single rate and dual rate
Operating temperature range:
C-temp: 0°C to 70°C
E-temp: 0°C to 85°C

Datasheet

COO: Malaysia

Request Quote



FTLFLCDP1

Dust plug

Prevents dust from contaminating RX and TX optical ports
Minimizes ingress of aqueous solution into RX and TX optical ports
Fits into any Finisar-LC SFP, SFF, SFP+ or XFP product
RoHS compliant/lead-free
Industrial storage temperature range: -40°C to 85°C

[Datasheet](#)

COO: Unknown

[Request Quote](#)



FTLX1475D3BTL

10G 10km 1310nm Industrial Temperature Single Mode Datacom SFP+ Optical Transceiver (Replace FTLX1471D3BCL)

Hot-pluggable SFP+ footprint
Supports 9.83 to 10.5Gb/s bit rates
Power dissipation < 1W RoHS compliant
Single 3.3V power supply
Maximum link length of 10km
Uncooled 1310nm DFB laser
Limiting electrical interface receiver
Duplex LC connector Built-in digital diagnostic functions
Industrial temperature range: -40°C to 85°C

[Datasheet](#)

<https://app.boxcn.net/shared/static/kqibwswc908isstxqvho2aj3ohv1630i.pdf>

COO: Malaysia

[Request Quote](#)



FTLX1672M3BTL

10GBASE-ER/OC-192 IR-2 Multirate 40km SFP+ Optical Transceiver

Hot-pluggable SFP+ footprint
Supports 8.5 and 9.95 to 11.3 Gb/s 40km link length (800ps/nm)
Internal transmitter/receiver CDR
Low power consumption
Cooled 1550nm EML laser
Limiting electrical interface receiver
Duplex LC connector Built-in digital diagnostic functions
RoHS compliant
Case temperature range: -40°C to 85°C

COO: Malaysia

Datasheet

<https://app.boxcn.net/shared/static/e671woc6xmmwgh!fi6cgf2nkk78dz.pdf>

Request Quote



FTLX8574D3BCL

10GBASE-SR/SW 400m Multimode Datacom SFP+ Optical Transceiver

Hot-pluggable SFP+ footprint
Supports 9.95 to 10.5 Gb/s bit rates (contact Finisar for higher data rate support)
Power dissipation < 1W RoHS compliant
Single 3.3V power supply
Maximum link length of 400m on OM4 MMF
Uncooled 850nm VCSEL laser
Receiver limiting electrical interface
Duplex LC connector Built-in digital diagnostic functions
Commercial temperature range: -5°C to 70°C

COO: Malaysia

Datasheet

<https://app.boxcn.net/shared/static/u2v6v4cgs6v636bsq8mlb5nz36zt5.pdf>

Request Quote



XPDV3320R

70 GHz Dual Window Photodetector High-Speed Detectors and Receivers

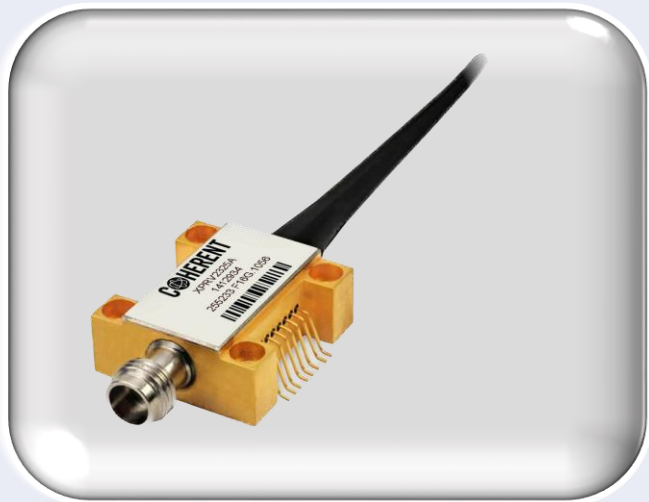
70GHz typical electrical 3dB bandwidth
Excellent flat response
Support of 1310nm and 1550nm
Well matched 50Ω output
Unique on-chip integrate bias network

Datasheet

<https://app.boxcn.net/shared/static/e671woc6xmmwgh9omfi6cgf2nkk78dz.pdf>

COO: Germany

Request Quote



XPRV2325A

30 GHz Linear Dual-Window Photoreceiver High-Speed Detectors and Receivers

Linear PIN/TIA photoreceiver module
31 GHz typical bandwidth
Mode select and optional I2C interface
Adjustable conversion gain, output swing
RF output disable
SMD package with V[®] connector
AC coupled output
1310 nm and 1550 nm wavelengths

Datasheet

<https://ii-viincorporated1.box.com/shared/static/mrwkzc2kzliwirq9xrodry5d340w.pdf>

COO: Germany

Request Quote



FOCM01FXC1ML-00

High Resolution Optical Channel Monitor – FOCM Series

Fully integrated compact, cost effective, low-profile OPM/OCM module
Excellent power accuracy independent of adjacent signal power
Excellent wavelength accuracy without the need of an external reference
Simple and flexible interface including configurable sub-GHz spectral slice widths
Rapid scanning of the entire C-band in real-time
Powerful advanced processing of spectral features including valid channel detection, center wavelength and OSNR monitoring
Patented and proprietary coherent detection technology
Stable and reliable operation

Datasheet

https://app.boxcn.net/shared/static/zaag45ndnvtaiu07usj3kno_nb797.pdf

COO: China

Request Quote



FOCM01FXC1MN

Flexgrid High Resolution Optical Channel Monitor (OCM)

Fully integrated compact, cost effective, low-profile OPM/OCM module
Excellent power accuracy independent of adjacent signal power
Excellent wavelength accuracy without the need of an external reference
Simple and flexible interface including configurable sub-GHz spectral slice widths
Rapid scanning of the entire C-band in real-time
Powerful advanced processing of spectral features including valid channel detection, center wavelength and OSNR monitoring
Patented and proprietary coherent detection technology
Stable and reliable operation

Datasheet

https://app.boxcn.net/shared/static/zaag45ndnvtaiu07usj3kno_nb797.pdf

COO: China

Request Quote

